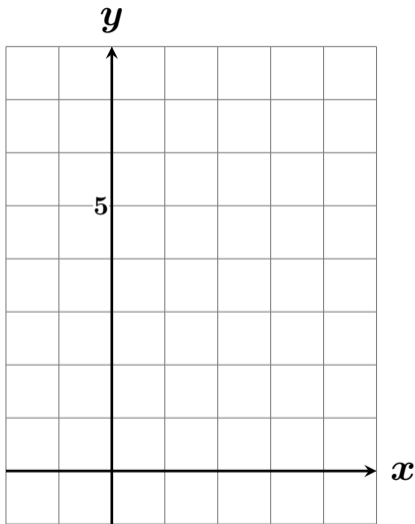
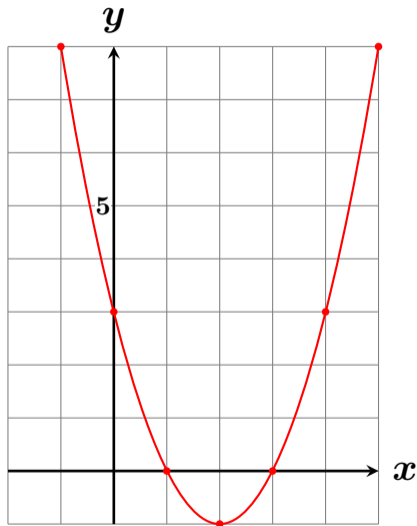


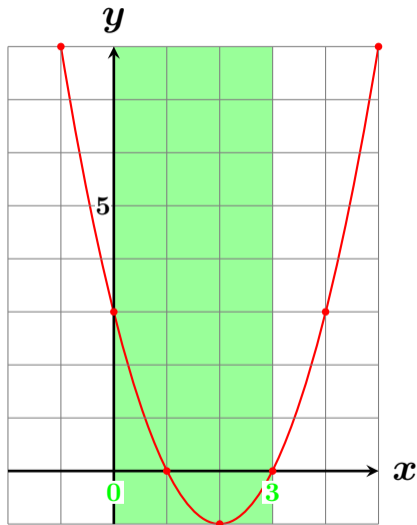
$y = x^2 - 4x + 3$ ($0 \leq x \leq 3$) の最大値・最小値？



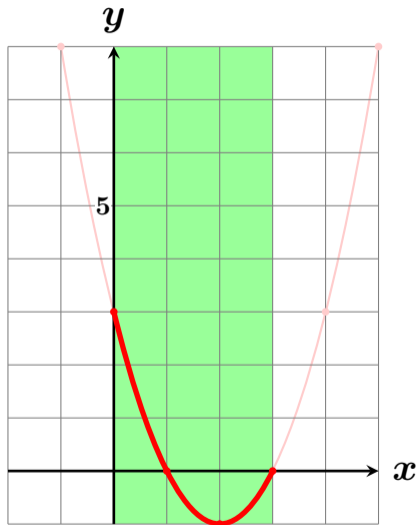
$y = x^2 - 4x + 3$ ($0 \leq x \leq 3$) の最大値・最小値？



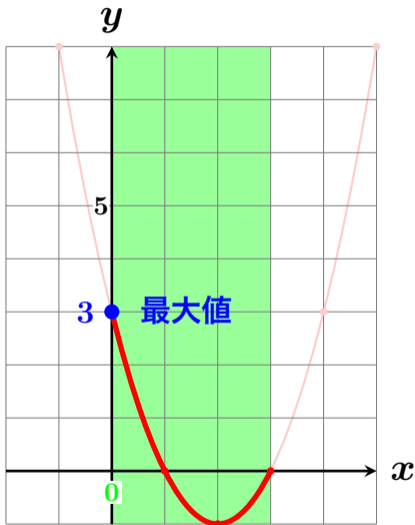
$y = x^2 - 4x + 3$ ($0 \leq x \leq 3$) の最大値・最小値？



$y = x^2 - 4x + 3$ ($0 \leq x \leq 3$) の最大値・最小値？

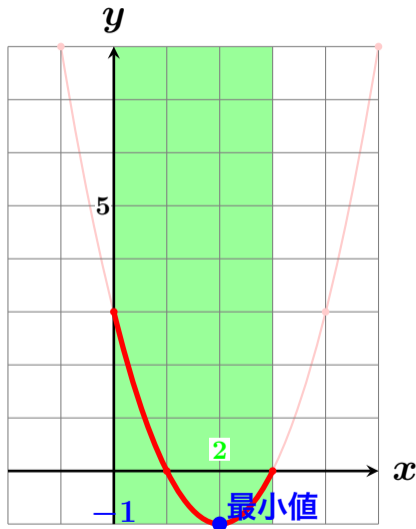


$y = x^2 - 4x + 3$ ($0 \leq x \leq 3$) の最大値・最小値？



最大値 **3** ($x = 0$ のとき)

$y = x^2 - 4x + 3$ ($0 \leq x \leq 3$) の最大値・最小値？



最大値 **3** ($x = 0$ のとき)

最小値 **-1** ($x = 2$ のとき)