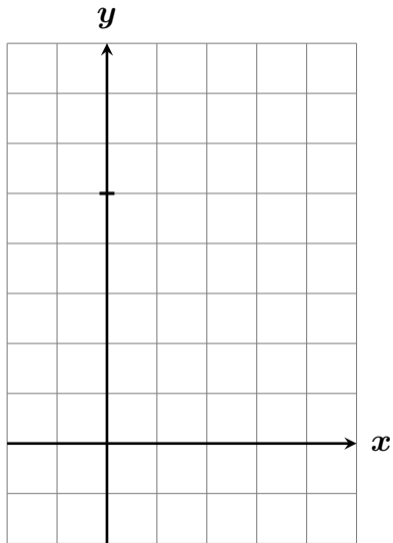
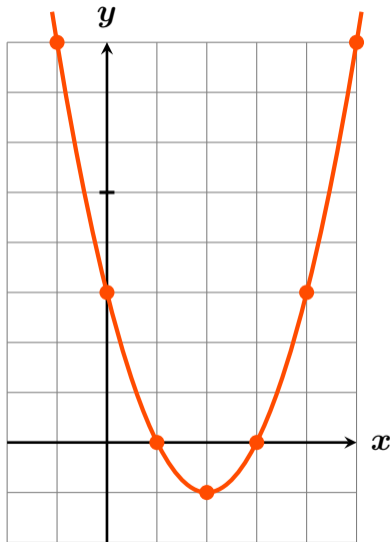


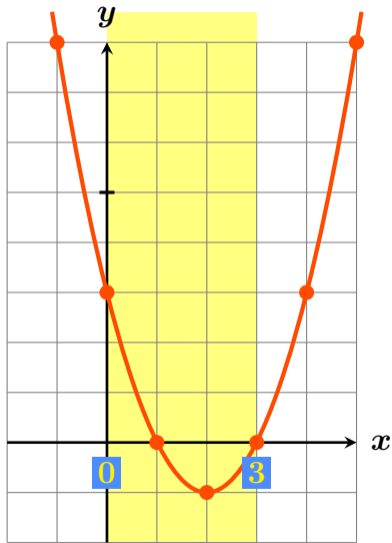
$y = x^2 - 4x + 3$ ($0 \leq x \leq 3$) の最大値・最小値？ #35 ①



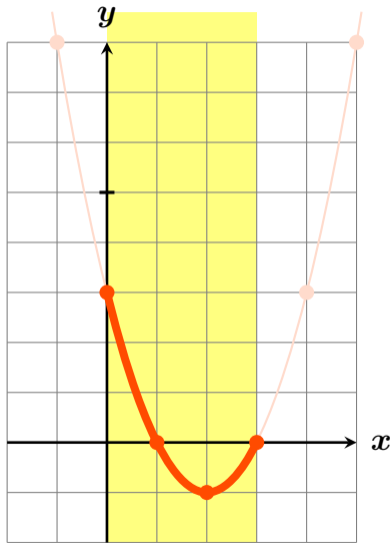
$y = x^2 - 4x + 3$ ($0 \leq x \leq 3$) の最大値・最小値？ #35 ①



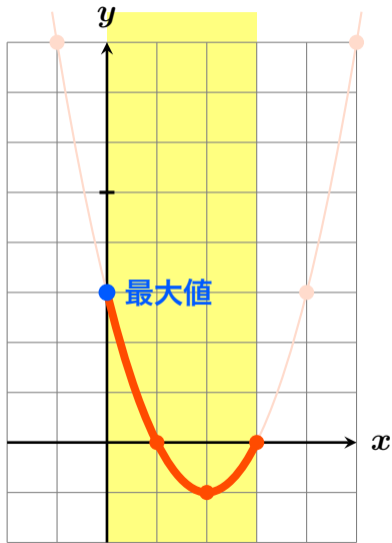
$y = x^2 - 4x + 3$ ($0 \leq x \leq 3$) の最大値・最小値？ #35 ①



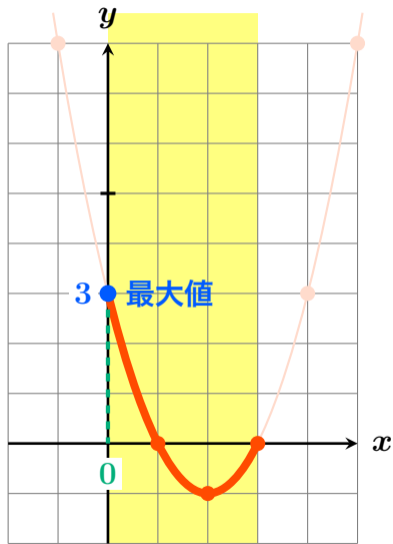
$y = x^2 - 4x + 3$ ($0 \leq x \leq 3$) の最大値・最小値? #35 ①



$y = x^2 - 4x + 3$ ($0 \leq x \leq 3$) の最大値・最小値? #35 ①

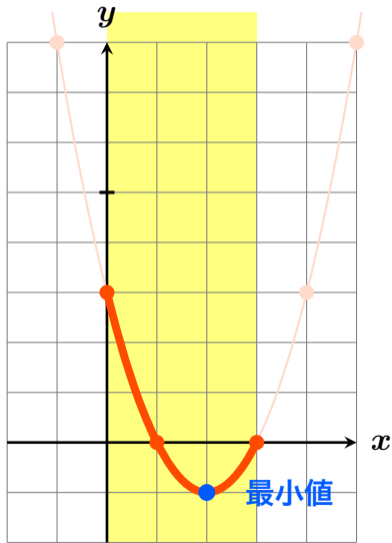


$y = x^2 - 4x + 3$ ($0 \leq x \leq 3$) の最大値・最小値? #35 ①



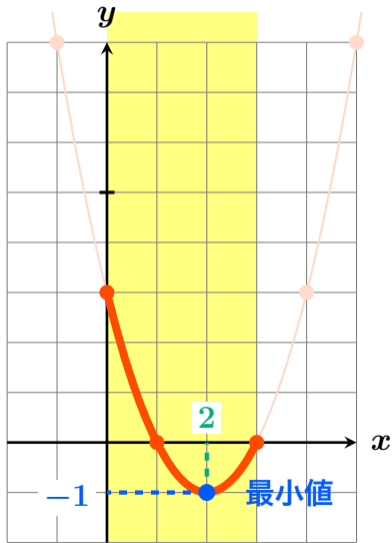
$x = 0$ のとき 最大値 3

$y = x^2 - 4x + 3$ ($0 \leq x \leq 3$) の最大値・最小値? #35 ①



$x = 0$ のとき 最大値 3

$y = x^2 - 4x + 3$ ($0 \leq x \leq 3$) の最大値・最小値? #35 ①



$x = 0$ のとき 最大値 3

$x = 2$ のとき 最小値 -1