

$f(x) = \frac{(x+1)(x+4)}{x}$  のグラフをかきなさい

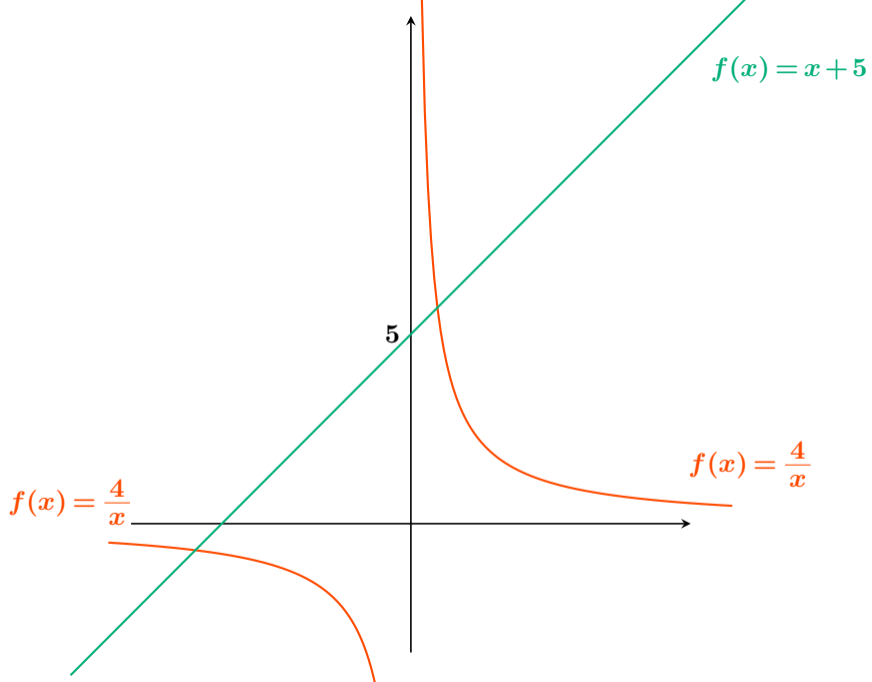
$$\begin{aligned} f(x) &= \frac{(x+1)(x+4)}{x} \\ &= \frac{x^2 + 5x + 4}{x} \\ &= \frac{x^2}{x} + \frac{5x}{x} + \frac{4}{x} \\ &= x + 5 + \frac{4}{x} \end{aligned}$$

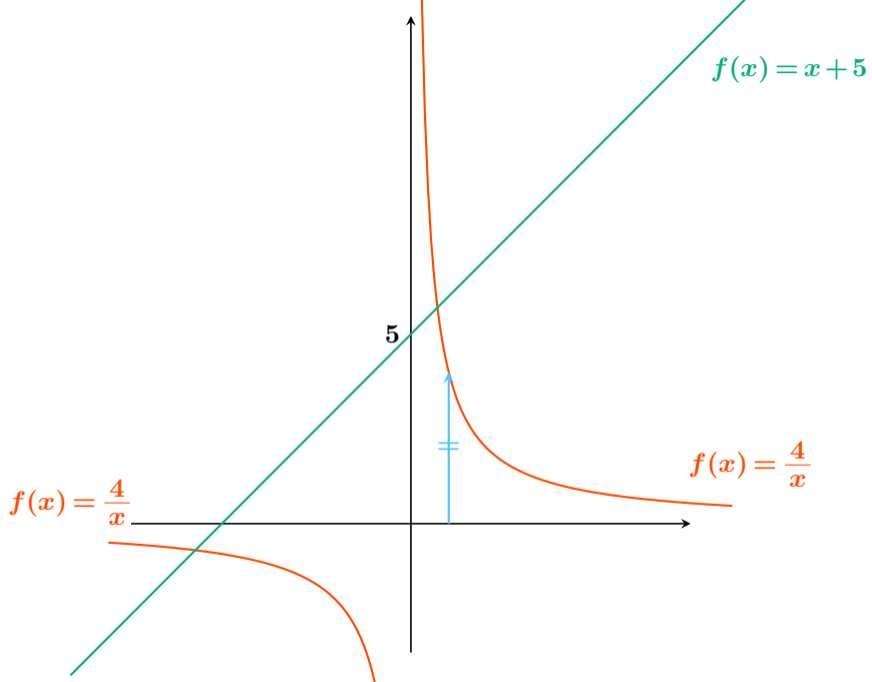
$f(x) = \frac{(x+1)(x+4)}{x}$  のグラフをかきなさい

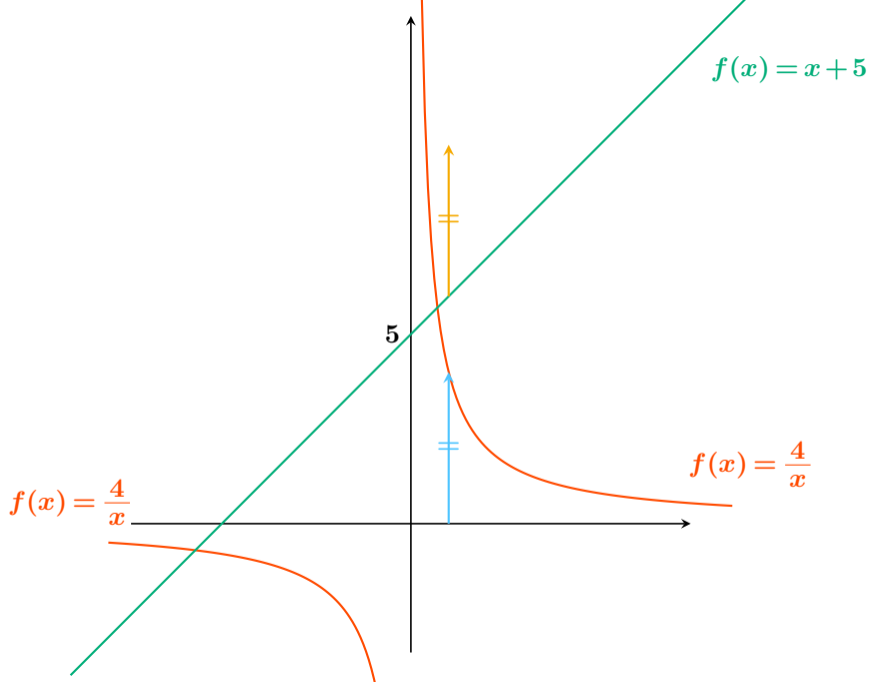
よって

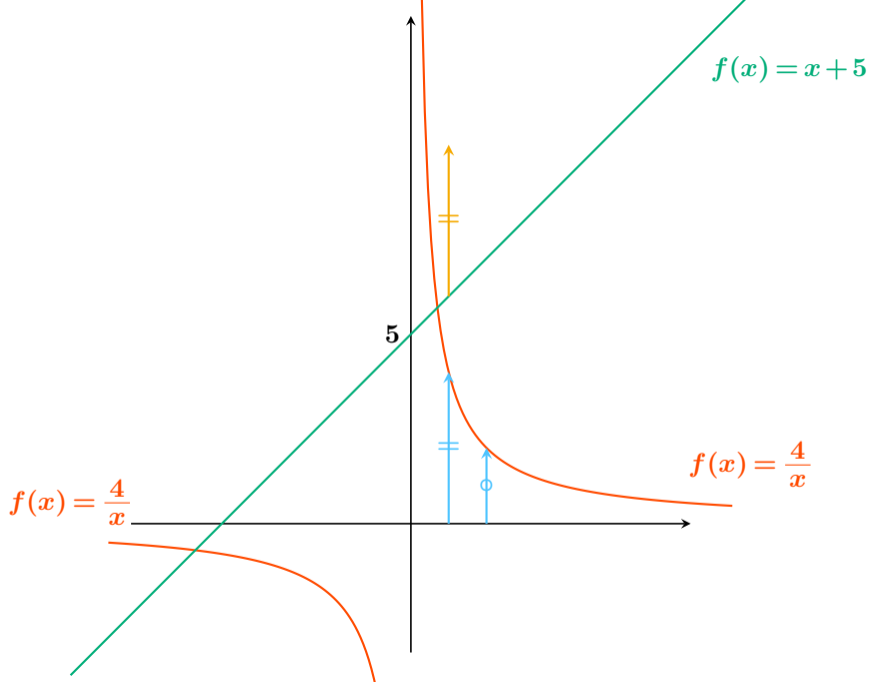
$$f(x) = x + 5 \quad \text{と} \quad f(x) = \frac{4}{x}$$

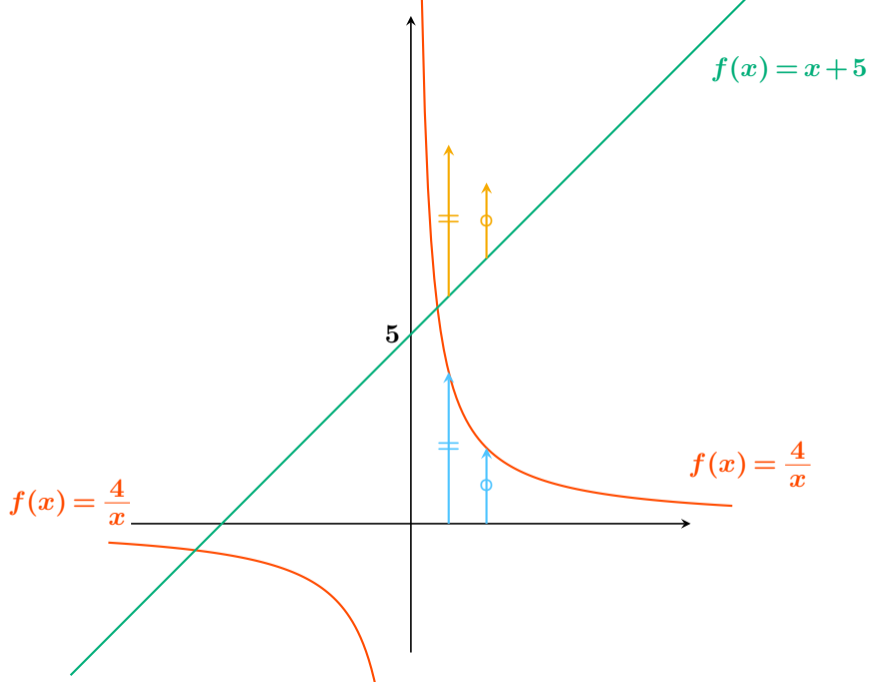
を合成したグラフになる。

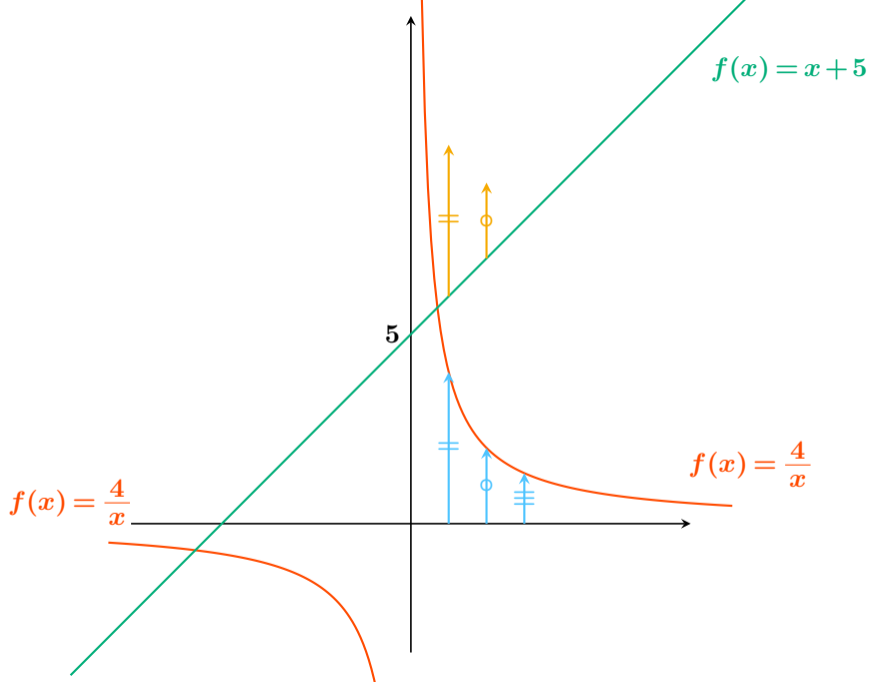




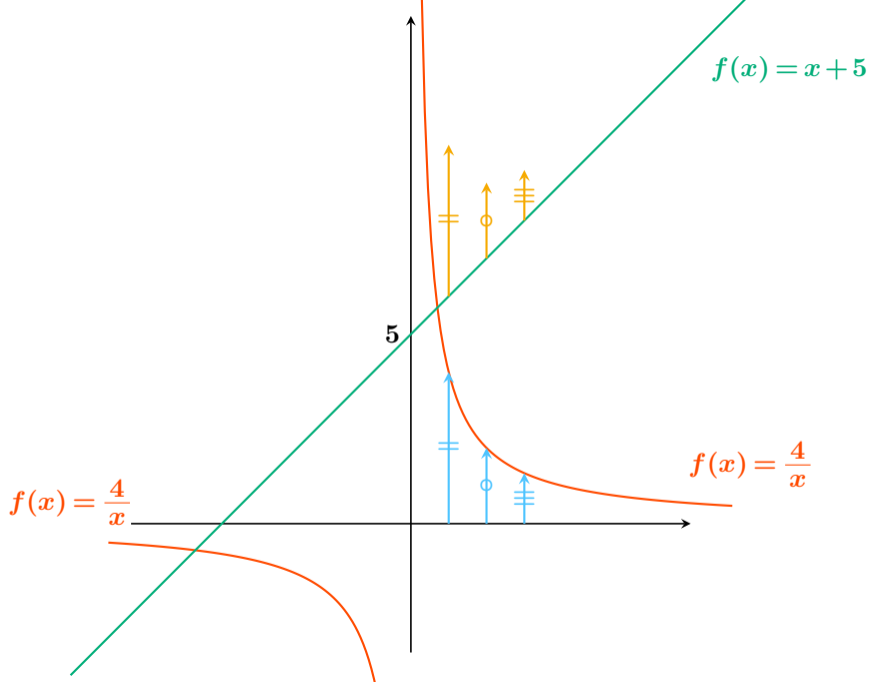


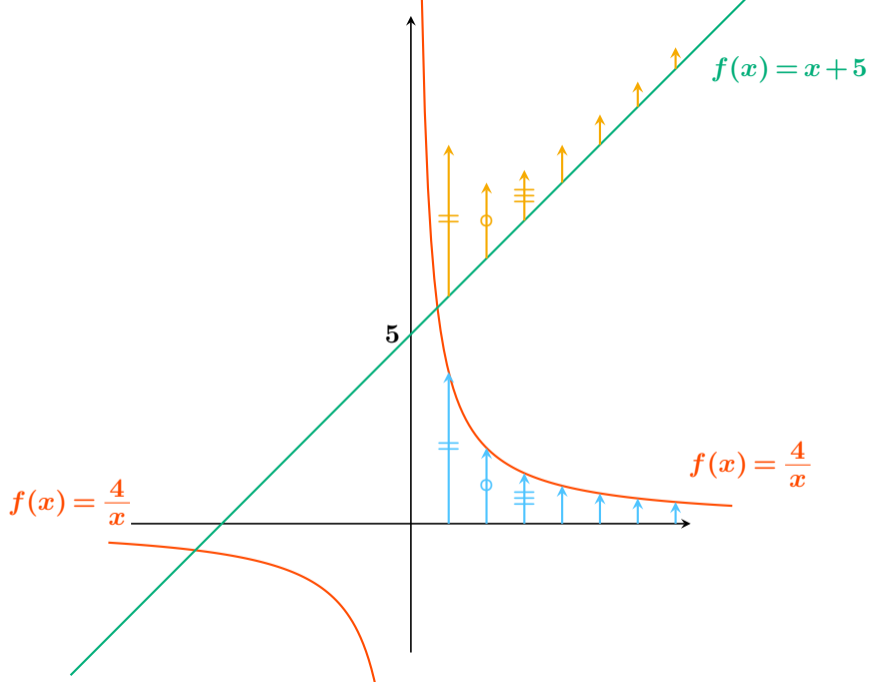


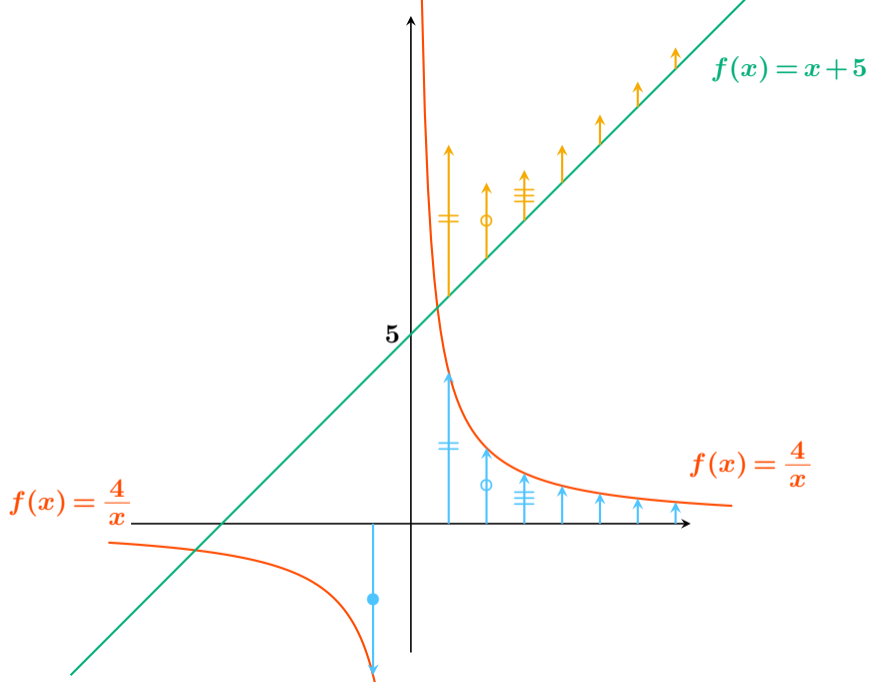


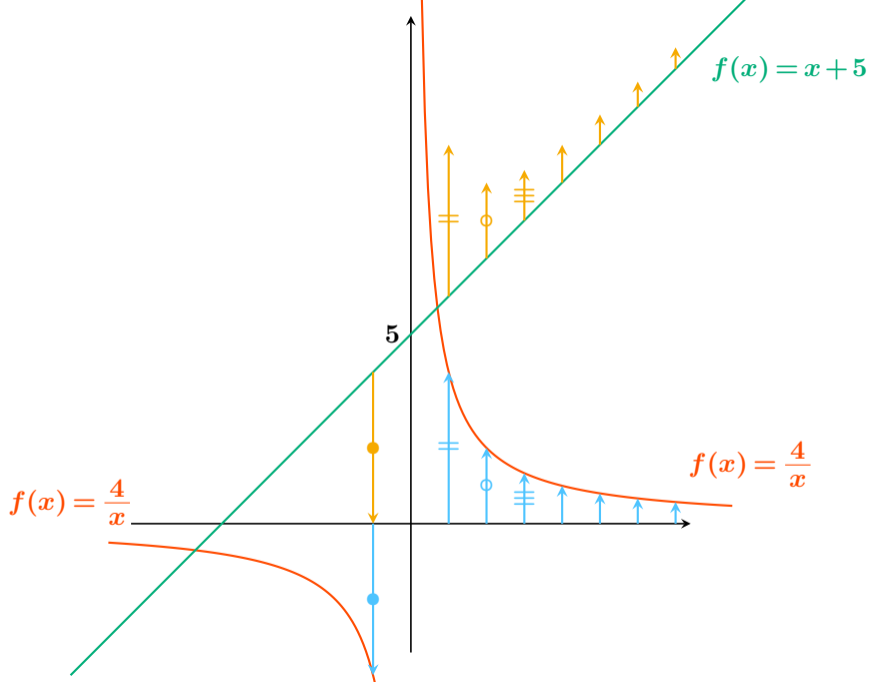


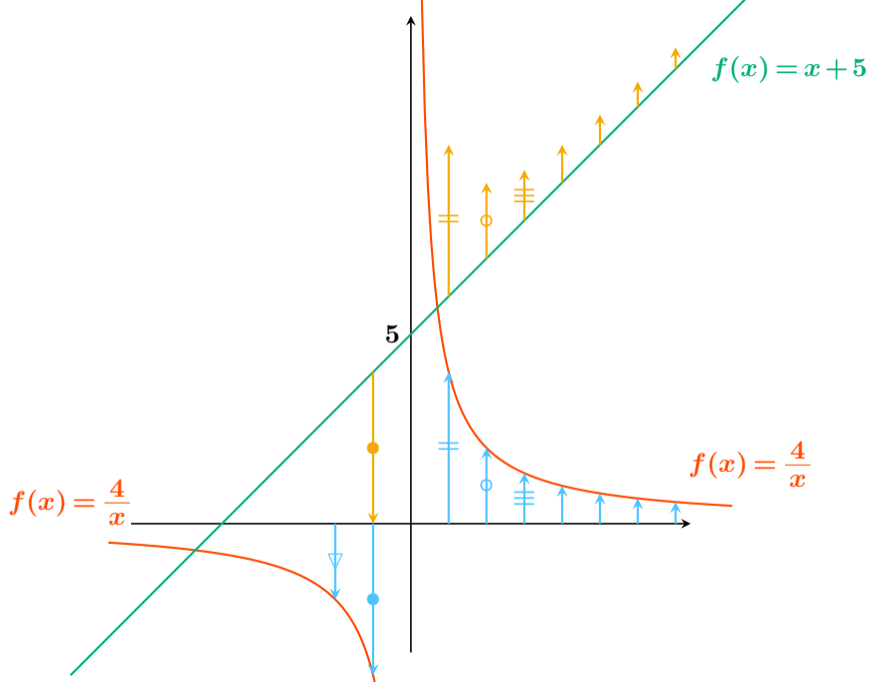


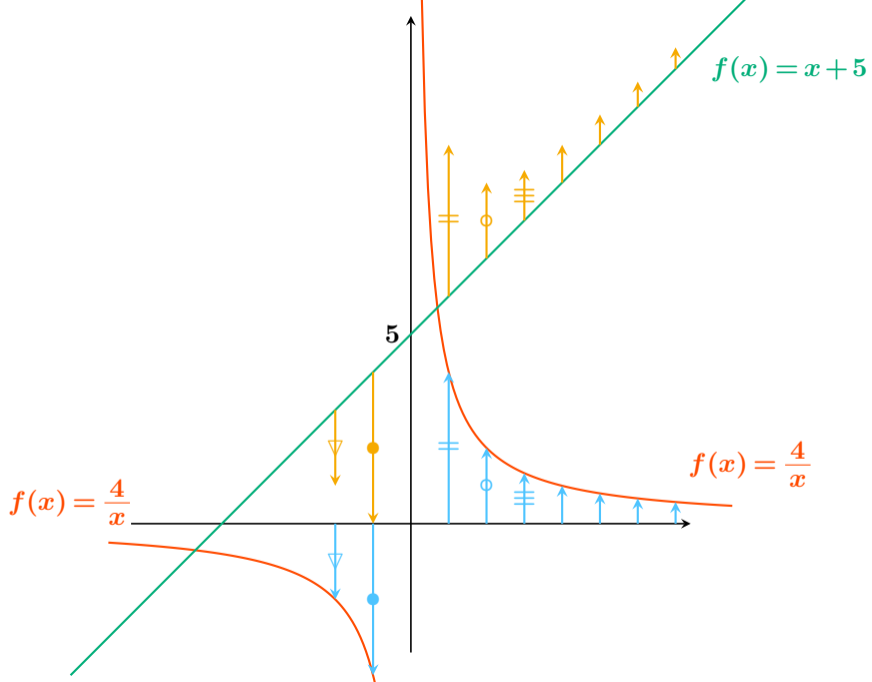


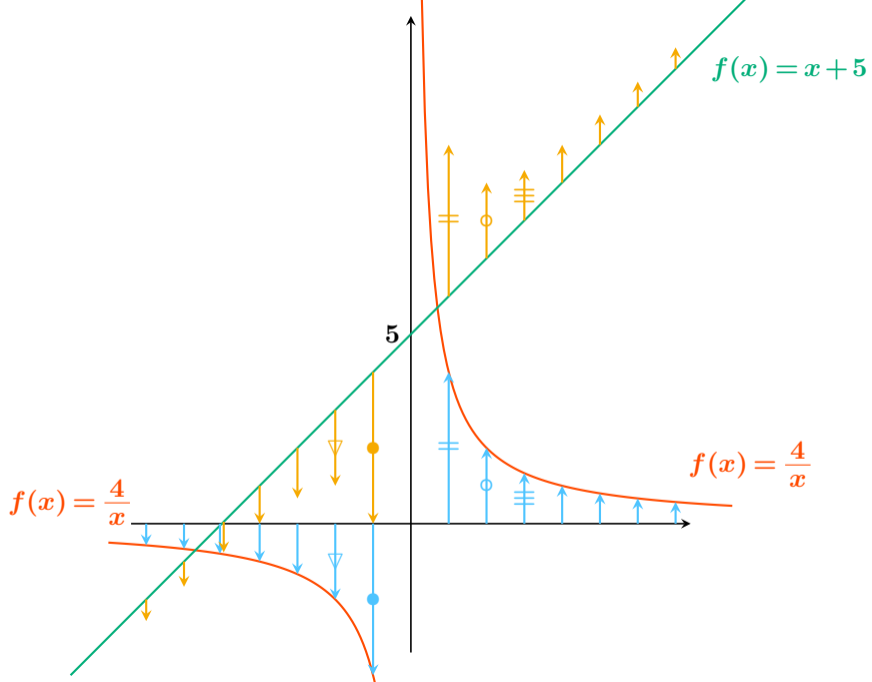


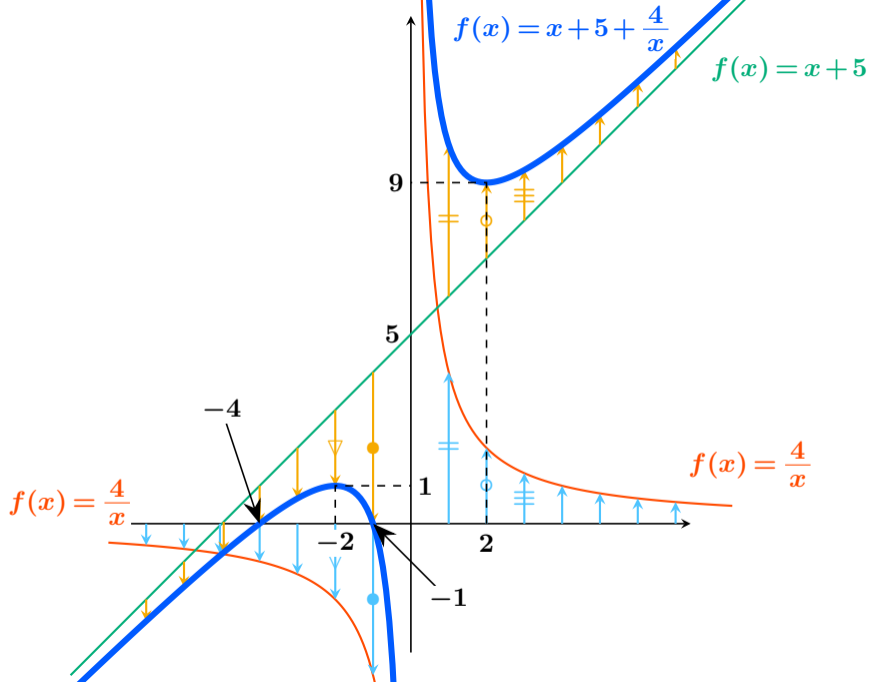














# 予測がつくと楽！

試験の解答では増減表を作る必要があるはずですが、あらかじめグラフの概形がイメージできていると解答するのが楽です。